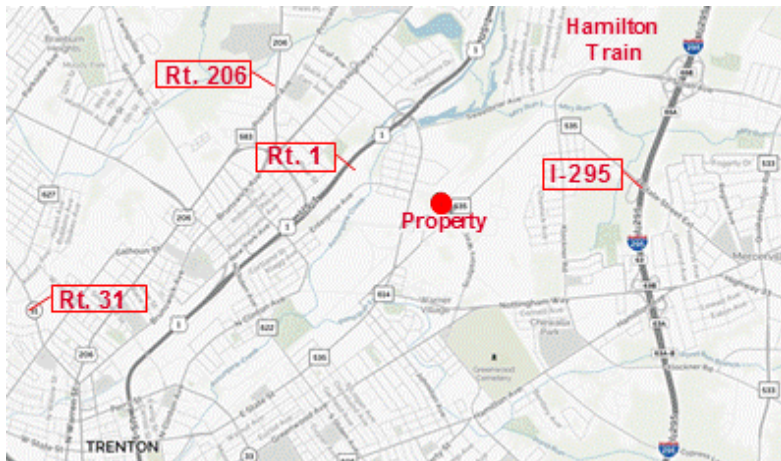


2100 East State Street, Hamilton NJ



Office for Lease



Available:

2,581 SF Office Front

- Lease \$16.50 SF plus operating Expenses, Utilities + Janitorial
- Estimated Operating Expenses \$2.50/SF
- Total Building: 21,700 SF
- Parking: 10 Cars
- Utilities: Gas, Sewer-City, Water, City
- Ceiling Height: 18'
- Column spacing 20x25'
- 1 Loading Dock, 2 Drive-ins
- Power: 400 Amps 3P
- Zoned L-1; 1.06 AC, in a 21,700SF Industrial Complex
- Located in Mercer County and Hamilton Twp. Industrial corridor, near intersection of Sculptor's Way
- Close to Route 1, I-95, I-295
- Hamilton Commuter Rail: 5 min;
Trenton Transit Center (NJT): 9 min

Contacts: Jerry Fennelly, Patrick Dintrone

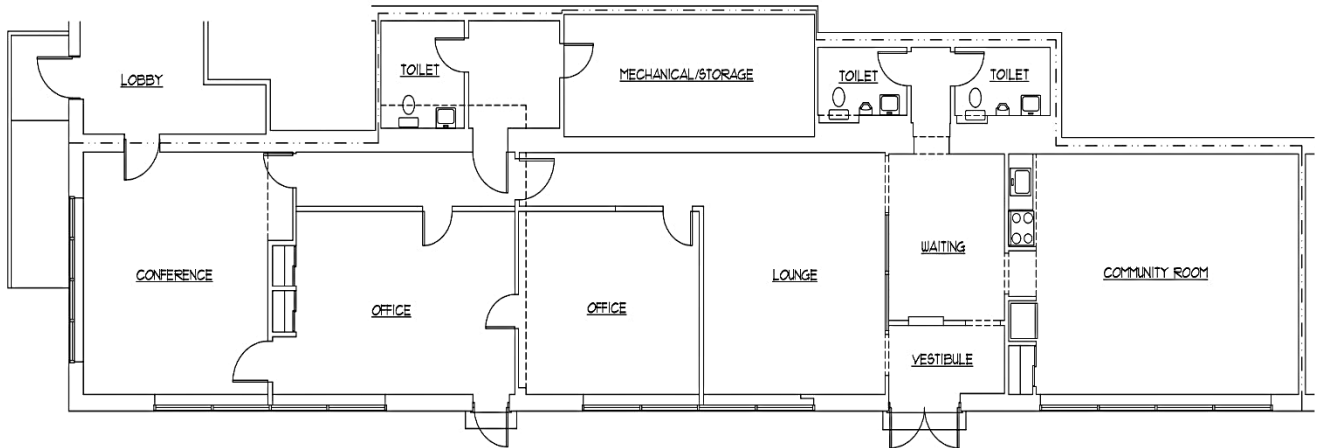
www.Fennelly.com | **609.520.0061** | Fennelly@Fennelly.com

NAI Fennelly™

Commercial Real Estate Services, Worldwide.

The information contained herein has been given to us by the owner of the property or other sources we deem reliable. We have no reason to doubt its accuracy, but we do not guarantee it. All information should be verified prior to purchase or lease.

2100 East State Street, Hamilton, NJ



2,581 SF

Contacts: Jerry Fennelly, Patrick Dintrone

www.Fennelly.com | **609.520.0061** | Fennelly@Fennelly.com

NAI Fennelly™
Commercial Real Estate Services, Worldwide.