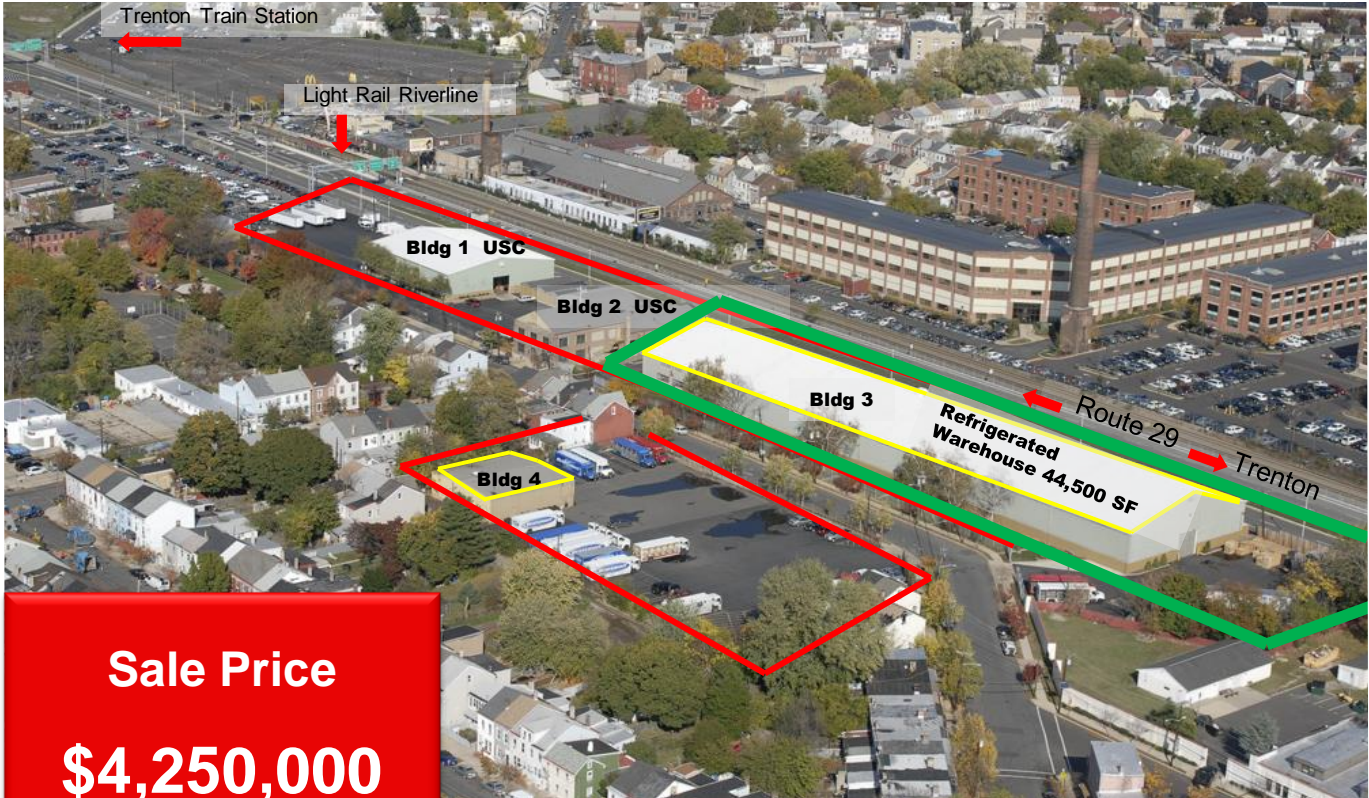


FOR SALE \$4,250,000

Office / Warehouse: 292 3rd Street, Trenton, NJ



Sale Price

\$4,250,000

**Existing Income
\$14,900/Month**

**ZONING
AND BUILDING USES:**

**Building Supply Yard
Refrigerated Building
Office, Warehouse
Outside Storage**

Total Space: 71,581 SF

Bldg 1 – 12,557 SF Warehouse (leased)
Bldg 2 – 14,450 SF Office, 8,000 SF Vacant
Bldg 3 – 44,574 SF Refrigerated Warehouse,
vacant, 30' Clear
Structure 4 – Open Lot - 1.12 Acres

Contacts: Jerry Fennelly, Matt Fennelly

www.Fennelly.com | 609.520.0061 | Fennelly@Fennelly.com

NAIFennelly
Commercial Real Estate Services, Worldwide.

The information contained herein has been given to us by the owner of the property or other sources we deem reliable. We have no reason to doubt its accuracy, but we do not guarantee it. All information should be verified prior to purchase or lease.

FOR SALE

Office / Warehouse: 292 3rd Street, Trenton, NJ

Warehouse

Building 1

Total Sq. Feet	12,557 SF*
Ceiling Height	30'
Column Spacing	102' clear space
Lot Size	157.47 x 350
Block	11601
Lot	10
Drive Thru	Both sides 12x14 doors
Outside Storage	30,000 SF

➤ *Leased To Universal Supply Co.

Warehouse

Building 3

Total Sq. Feet	44,574 SF
Office	600 SF
Ceiling Height	30-40'
Column Spacing	Clear span
Lot Size	157 x 626.90 (2.25Acres)
Block	11601
Lots	3, 4, 5, 6, 7
Refrigerated Box	2,000 SF

Office

Building 2

Total Sq. Feet	14,540 SF*
1 st + 2 nd Floor	Space available
Block	11601, 5 Lots
Heat	Gas Hot Water, Baseboard / 4 Zones;
Sprinkler	Basement

➤ *Leased approx 6,000 SF for Retail

➤ *Available 8,500 SF

Open Lot

Lot 4

Lot Size	297 x 165
Block	11702
Lot	1

• Zoning: UEZ (Urban Enterprise Zone)

• Taxes:

Building 1: \$23,767

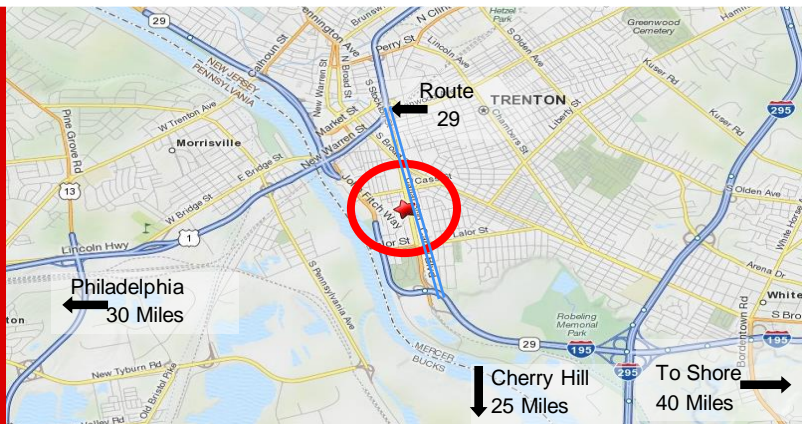
Building 2: \$33,233

Building 3: \$98,000

Lot 4: \$15,000

\$170,000

• Water & Sewer: City



Contacts: Jerry Fennelly, Matt Fennelly

www.Fennelly.com | 609.520.0061 | Fennelly@Fennelly.com

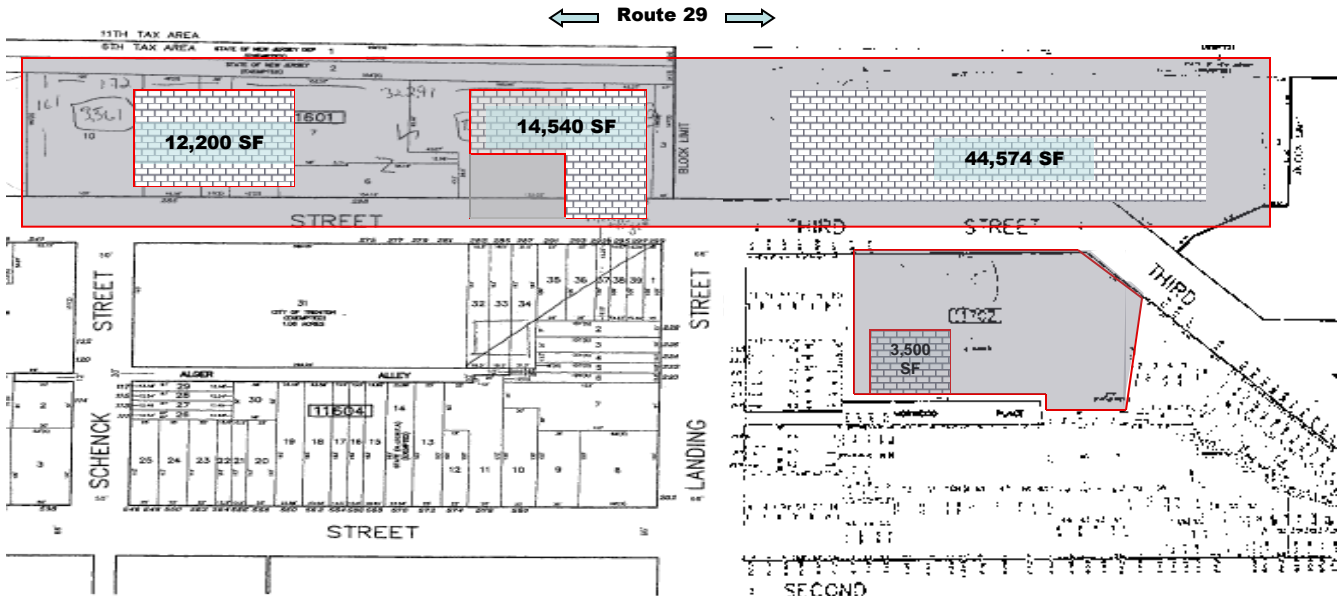
NAIFennelly

Commercial Real Estate Services, Worldwide.

The information contained herein has been given to us by the owner of the property or other sources we deem reliable. We have no reason to doubt its accuracy, but we do not guarantee it. All information should be verified prior to purchase or lease.

FOR SALE

Office / Warehouse: 292 3rd Street, Trenton, NJ



**Property occupies various Trenton city blocks/lots (approx. 5.5 AC)
and consists of five structures with parking lots.**

- Situated in the UEZ (Urban Enterprise Zone)
- Located in Trenton NJ, Mercer County; approx. 30 Miles from Philadelphia
- Close to Routes 129 and 29; Trenton Train Station and Light Rail River Line – Transit Zone



Rear Bldg. 1, 12,200 SF, Clear Span



Two Story Office, 14,450 SF



Repair Facility, Bldg. 4



Rear Bldg.3, 44,574SF, Clear 30'

OPERATING EXPENSES

Taxes	\$170,000.00
Insurance	22,408.00
Sprinkler Water	5,800.00
Sprinkler System	1,000.00
Landscaping	1,200.00
Total	\$200,408.00

$(\$200,408 / 71,314 = \$2.81 \text{ PSF})$

Contacts: Jerry Fennelly, Matt Fennelly

www.Fennelly.com | 609.520.0061 | Fennelly@Fennelly.com

NAIFennelly
Commercial Real Estate Services, Worldwide.

The information contained herein has been given to us by the owner of the property or other sources we deem reliable. We have no reason to doubt its accuracy, but we do not guarantee it. All information should be verified prior to purchase or lease.

FOR SALE OR LEASE

Office / Warehouse: 292 3rd Street, Trenton, NJ

Urban Enterprise Zone Employment Tax Credit

A credit against the entire net income component of the corporation business (income) tax to corporations actively conducting business from a location within a designated enterprise zone, for certain new, full-time, permanent employees. A credit in the amount of either \$1,500 or \$500 is available for each new hire at the zone facility. There are sales tax benefits related to the UEZ program as well.

Federal Tax Credit Services

WOTC (including Long-Term Assistance; formerly WTW)

Other Statutory Programs

Urban Transit Hub Credit – 100% of capital investments

Manufacturing Equipment Tax Credit

A credit for manufacturing and production machinery and equipment acquired by purchase or lease in the amount of 2% of the investment credit base with a maximum credit of \$1M/year. The credit percentage is doubled (4%) if the taxpayer has 50 or fewer employees and entire net income of less than \$5mio.

Negotiated Incentives

- ⇒ Business Employment Incentive Program (BEIP)
- ⇒ Business Retention and Relocation Assistance Grant (BRRAG)
- ⇒ Sales & Use Tax Exemption Program (STX-UEZ)
- ⇒ Technology Business and Tax Transfer Program

Capacity Info on Refrigeration Equipment

Building 2: (50 Deg. F Storage Temp)

2 Condensing Units Copelametic Compressor M #9RS1-1505-THD

Capacity @ 50 Deg. F / 40 Deg. F Suction = 15 HP Each or 167,000 Btu or 13.9 Ton of Cooling

Total Box Capacity @ 50 Deg. F Storage:

13.9 HP X (2) units = 27.8 HP

167,000 BTU x (2) = 334,000 Btu or 27.8 Tons of Cooling (334,000/12000)

Building 3 (50 Deg. F Storage Temp)

6 Kramer Condensing Units M# 6RP2-350A-TSK Copeland Compressor

Capacity @ 50 Deg. F / 40 Deg. F Suction = 35 HP Each or 399,000 Btu or 33 Tons of Cooling

Total Room Capacity @ 50 Deg. Storage:

35 HP X (6) units = 210 HP

399,000 BTU x (6) = 2,394,000 Btu or 199.5 Tons of Cooling (2,394,000/12,000)

Bud Box: (35 Deg. F Storage Temp)

2 Russell Condensing Units m #DL15H22-E / Copeland Discus Compressor M# 3DS3-150E

Capacity @ 35 Deg. F / 25 Deg. F Suction = 15 HP Each or 140,700 Btu or 11.7 Ton of Cooling

Total Box Capacity @ 35 Deg. F Storage:

15 HP X (2) units = 30 HP

140,700 BTU x (2) = 281,400 Btu or 23.5 Tons of Cooling (281,400/12000)

Non- Bud Box: (40 Deg. F Storage Temp)

2 Condensing Units Copelametic Compressor M #MRH4-0760-TFC

Capacity @ 40 Deg. F / 30 Deg. F Suction = 7.5 HP Each or 71,000 Btu or 5.9 Ton of Cooling

Total Box Capacity @ 40 Deg. F Storage:

7.5 HP X (2) units = 15 HP

71,000 BTU x (2) = 142,000 Btu or 11.8 Tons of Cooling (142,000/12000)

Above are approximate capacities based on operating temperatures and all units use refrigerant 22.

Contacts: Jerry Fennelly, Matt Fennelly

www.Fennelly.com | 609.520.0061 | Fennelly@Fennelly.com

NAIFennelly

Commercial Real Estate Services, Worldwide.

The information contained herein has been given to us by the owner of the property or other sources we deem reliable. We have no reason to doubt its accuracy, but we do not guarantee it. All information should be verified prior to purchase or lease.