



17-19 Model Avenue Hopewell, New Jersey 08525

- 6,600 SF Office Building with apartments on 2nd floor
- 2-Story Concrete Block; 3,300 SF per floor
- Built 1940, Renovated 2007
- 16 Parking Spaces
- Lot Size - .30 Acres
- Zoning – RO Residential Office
- Taxes: \$15,584 (2020)
- Great investment or owner/occupier property
- Excellent location, right near the heart of Hopewell Borough
- Close proximity to Princeton and Pennington
- The property is fully occupied with longtime tenants at below market rent
- 4 of the 6 spaces are offices and 2 are apartments

Sales Price: \$790,000



For more information:

Gerard Fennelly

fennelly@fennelly.com

Matthew Fennelly

mattfennelly@fennelly.com

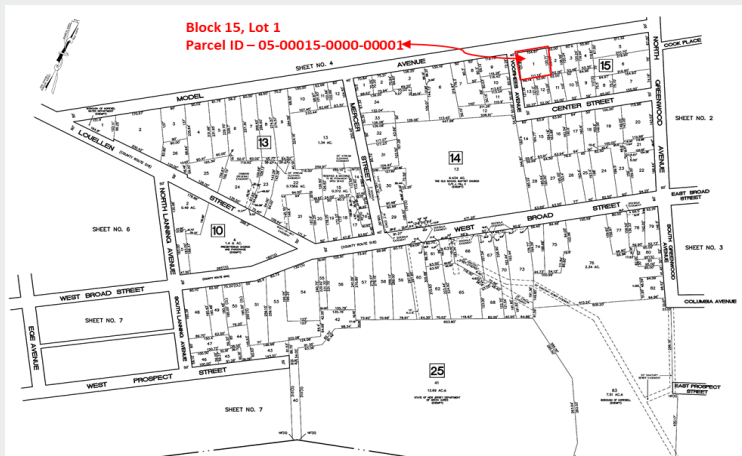
+1 609 520 0061

www.fennelly.com

For Sale
6,600 SF
Office / Residential

17-19 Model Avenue

Hopewell, New Jersey 08525



Permitted Primary Uses:

- Professional and business offices
- Industrial, public and institutional
- Retail
- Manufacturing
- Warehousing, etc.
- Church and similar places of worship
- Residential