

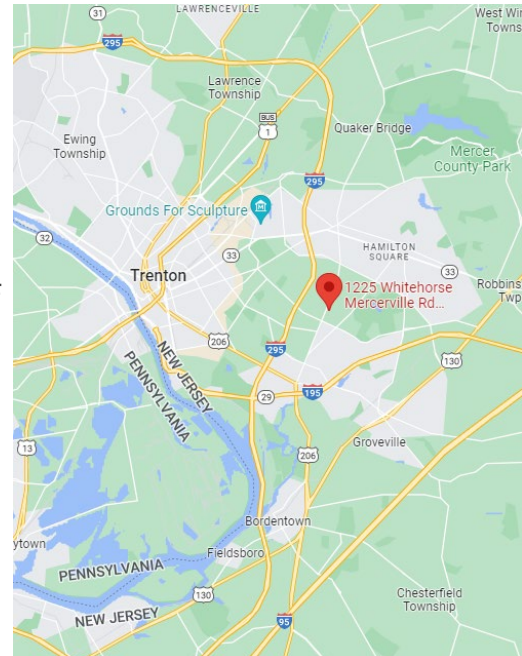


## Whitehorse Executive Center

1225-1255 Whitehorse Mercerville Road  
Hamilton, NJ 08619

- Whitehorse Executive Center is devoted primarily to Medical Offices bringing a good flow of traffic to all tenants
- Several Units available - Largest contiguous Space: 13,246 SF
- Servicing an immediate population of 90,000 people
- Ample parking, paved lot
- FiOS & cable available
- On-site Management
- Property kept well lit
- Specific Building Directory Signage
- Transit nearby: Bus Stop
- Located in Hamilton Township, Mercer County

**Lease Rate: \$14.50/SF**  
**plus Operating Expenses (\$9.35/SF)**



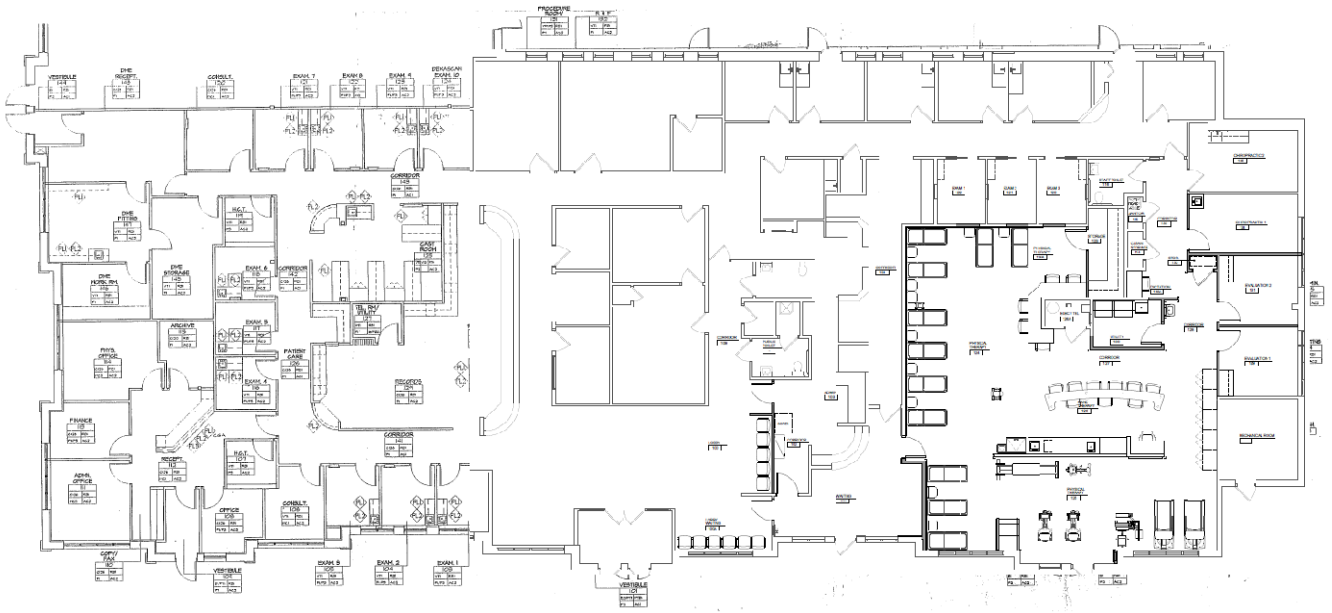
For more information:  
**Gerard Fennelly**  
**Matthew Fennelly**

For Lease  
Building D | 14,189 SF

1225 Whitehorse Mercerville Road  
Hamilton, NJ 08619

### ► Suites 217-225 - 13,246 SF

- Building D; **Office/Lab/Medical Rehab**
- \$14.50/SF base rent plus Operating Expenses, Gas/Electric and Janitorial.
- 13,246 SF Contiguous Office/Lab Space
- Located in the front of the Complex

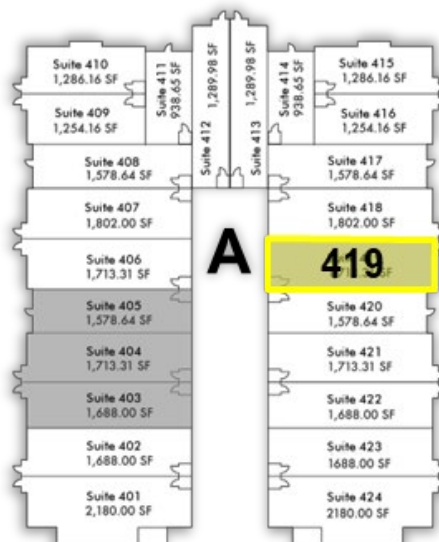
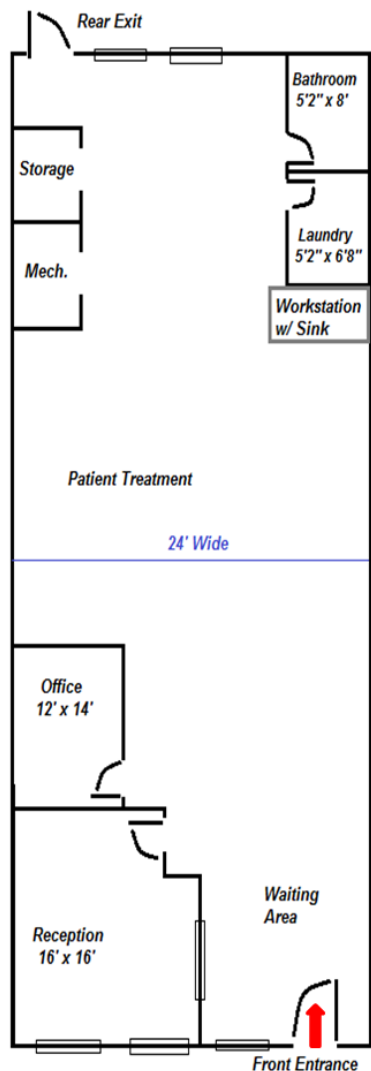


 **Matterport™**  
**3D Tour**



1255 Whitehorse Mercerville Road  
Hamilton, NJ 08619

For Lease  
Building A | 1,713.31 SF



➔ **Suite 419 - 1,713.31 SF**

- Building A, Courtyard, **Office/Medical Space**
- \$14.50/SF base rent plus Operating Expenses, Gas/Electric and Janitorial.

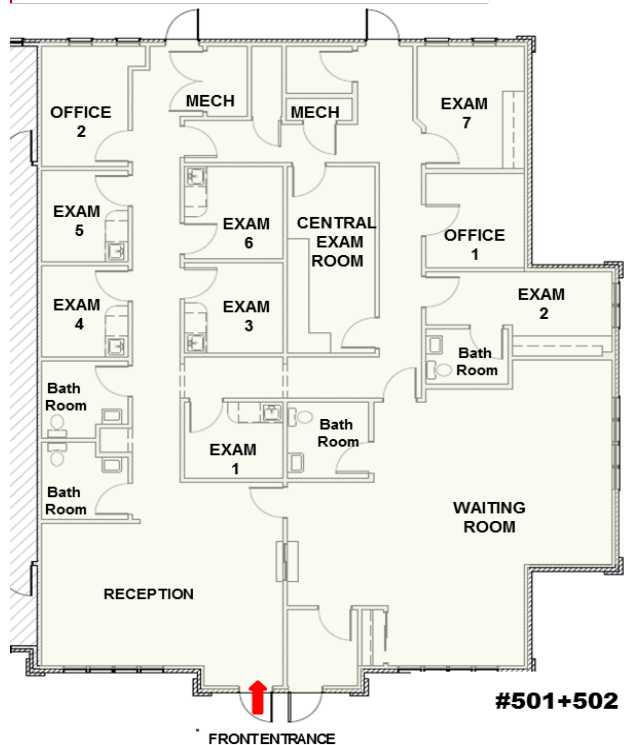
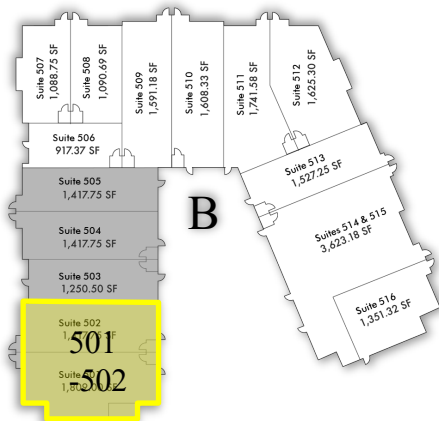


For Lease  
Building B | 3,226.75 SF

1245 Whitehorse Mercerville Road  
Hamilton, NJ 08619

➡ **Suites 501 & 502 – 3,226.75 SF**

- Building B, Courtyard, **Medical/Office Space**, Divisible to 1,250 SF
- \$14.50/SF base rent plus Operating Expenses, Gas/Electric and Janitorial.



# Whitehorse Executive Center

1225-1255 Whitehorse Mercerville Road

Hamilton, NJ 08619



	BLDG.	SUITE	SIZE	BASE RENT	ENTRANCE
2	D	217-225	13,246 SFS	\$14.50/NNN	Courtyard
6	B	501-502	3,226.75 SF	\$14.50/NNN	Courtyard
7	A	419	1,713 SF	\$14.50/NNN	Courtyard