



## Plainsboro Village Center & Plainsboro New Downtown

Plainsboro, NJ 08536

### Available for Lease

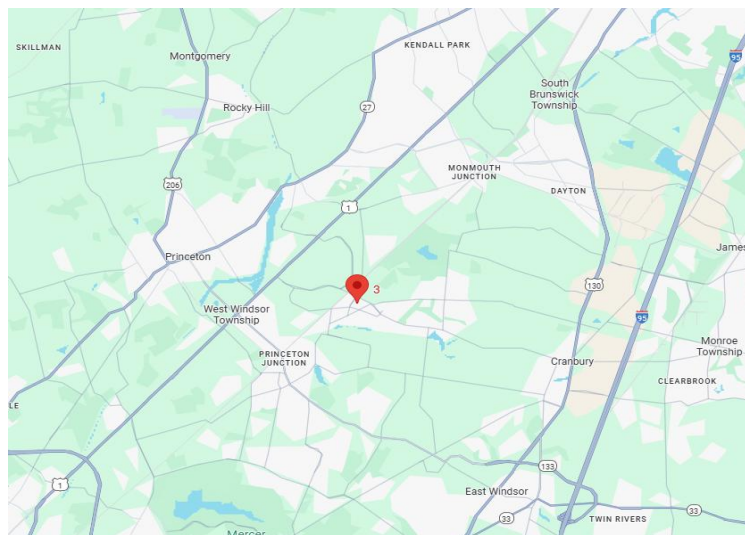
- Built-out Medical, Office or Retail available
- Customize your Own Space in New Buildings or lease built-out units
- Newly constructed buildings along Plainsboro Bypass
- Retail use availabilities on site
- New Downtown: Mixed-use office condos with negotiable Landlord work letter, 2 Elevators, Full wet sprinkler systems
- Operating Expenses estimated at \$12.25/SF
- Convenient to Routes 1, 130, NJ Turnpike exit 8A
- Join Princeton Medical Group and countless other Medical and Office Tenants

Rental Rate:

Available Upon Request

### Available Units:

5 Schalks Crossing	Suite 224: 2,704 SF Suite 226: 564 SF
9-11 Schalks Crossing	Suite 626: 964 SF (Office)
3 Market Street	Suite 426: 1,882 SF
4 Market Street	Suite 820: 2,528 SF
3 Liberty Street	Suite 1031: 959 SF (Shell) Suite 1037: 2,147 SF (Shell) Suite 1038: 1,783 SF (Medical)

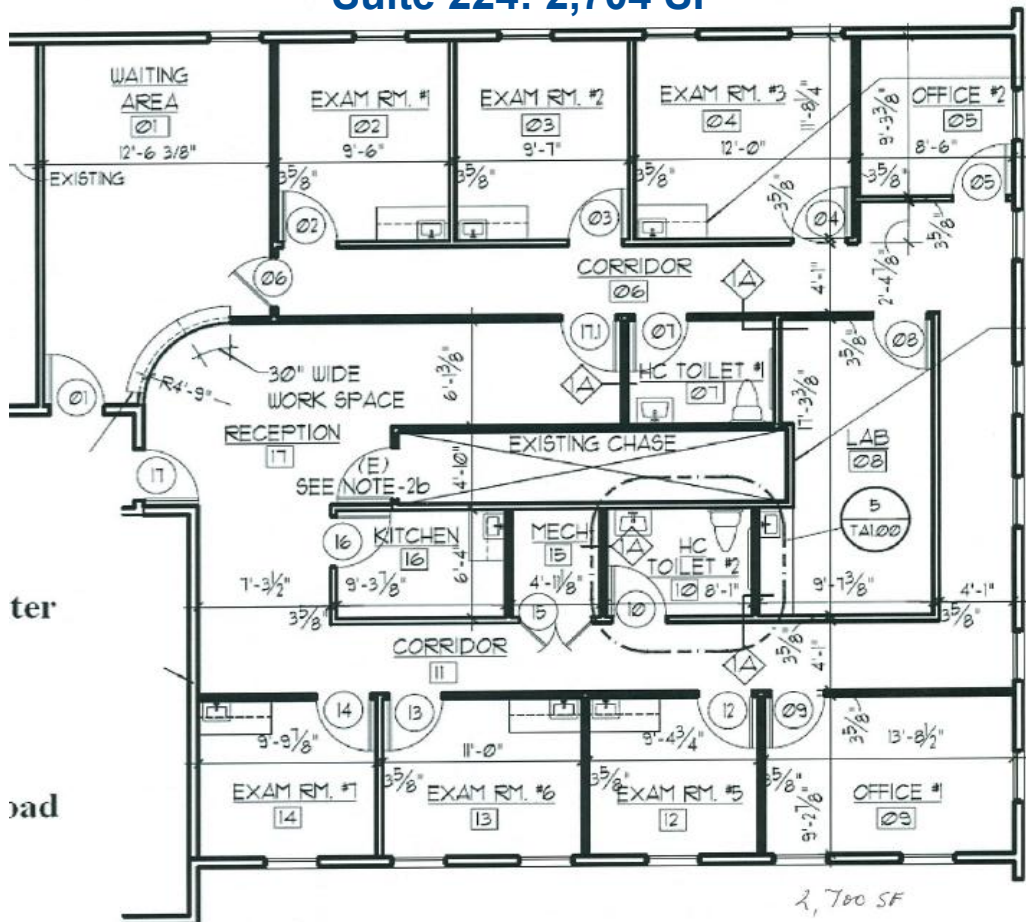


# For Lease

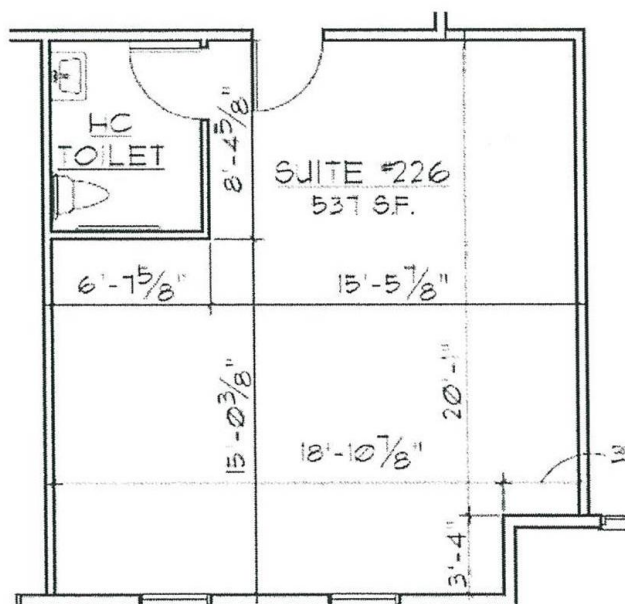
## Office / Medical Space

Plainsboro Village Center and Plainsboro  
New Downtown  
**Schalks Crossing Road**  
Plainsboro, NJ 08536

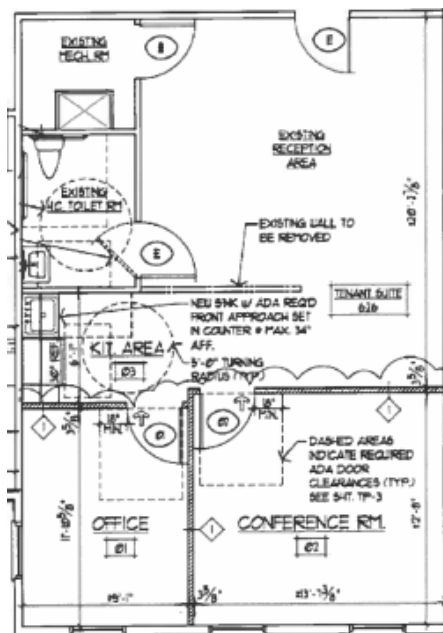
### Suite 224: 2,704 SF



### Suite 226: 564 SF

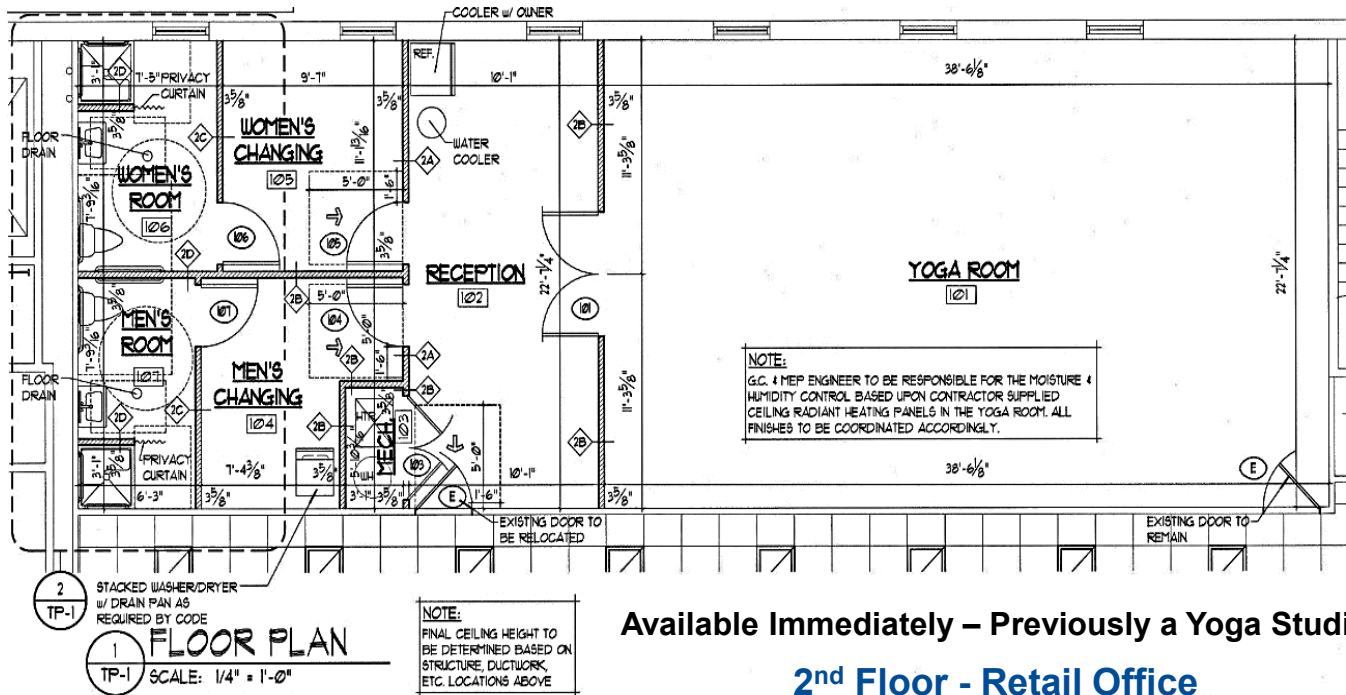


### Suite 262: 964 SF



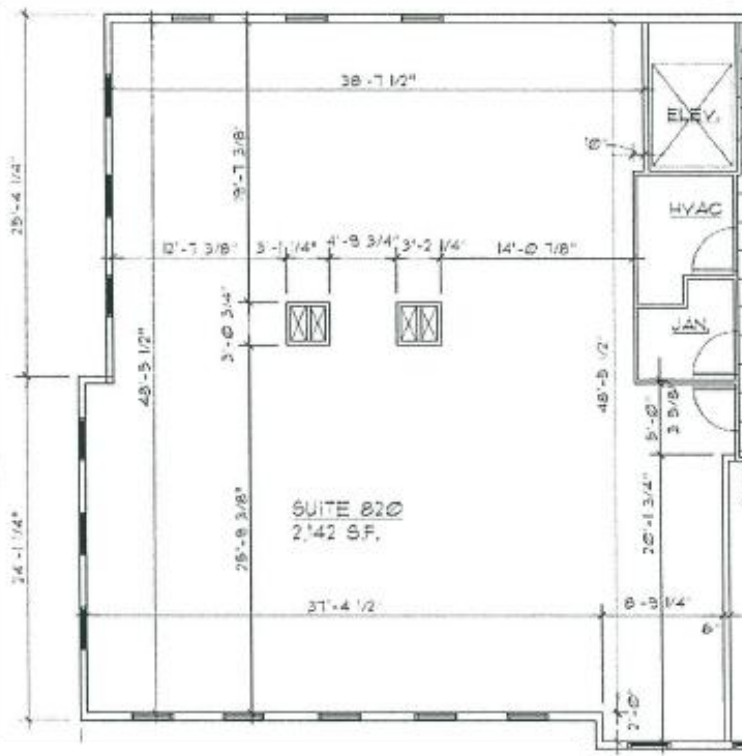
**3 Market Street**

**Suite 426: 1,882 SF**



**4 Market Street**

**Suite 820: 2,520 SF**



# For Lease

## Office / Medical Space

Plainsboro Village Center and Plainsboro  
New Downtown  
**3 Liberty Street, Buildings 10 & 11**  
Plainsboro, NJ 08536



*Situated within a newly constructed Village Center consisting of 9 buildings which provide a combination of Office, Retail, and Medical uses.*

**Suite 1038, 3rd Floor**  
**1,783 SF Medical Space**  
**Available Immediately**

- 5 Exam Rooms
- 1 private Office
- Waiting/Reception
- 1 Bathroom

