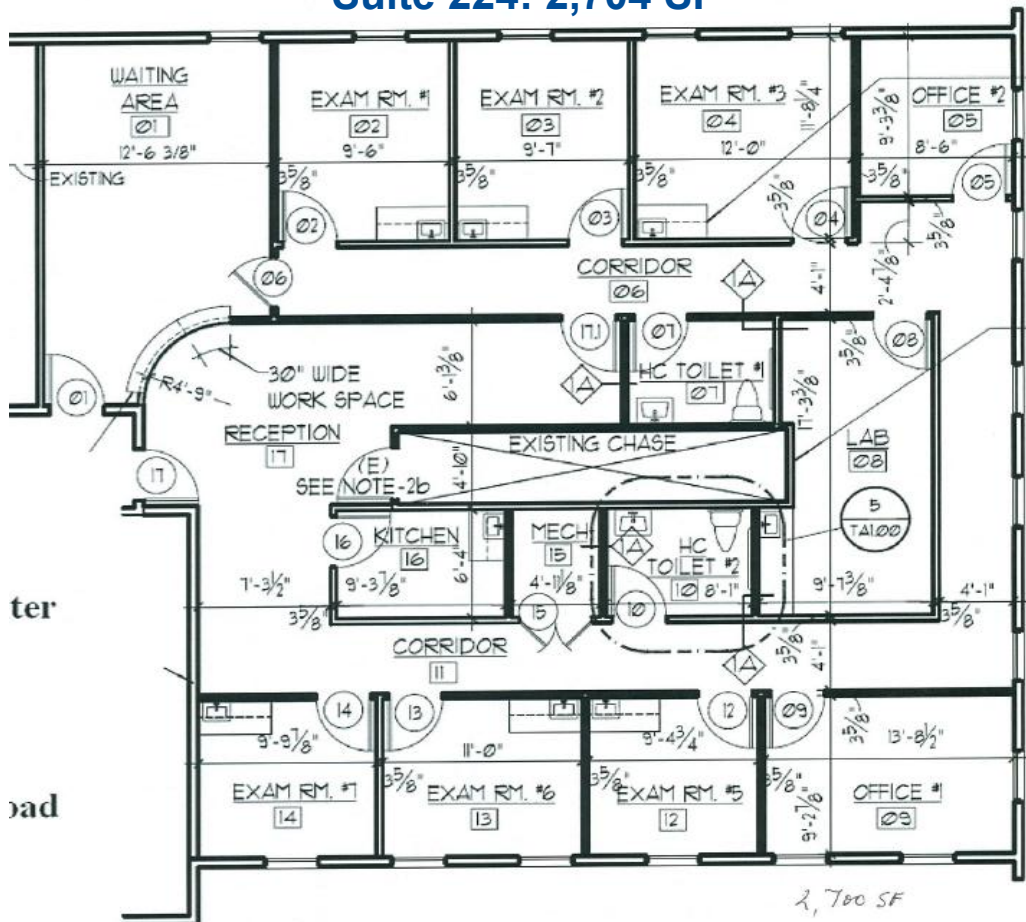


# For Lease

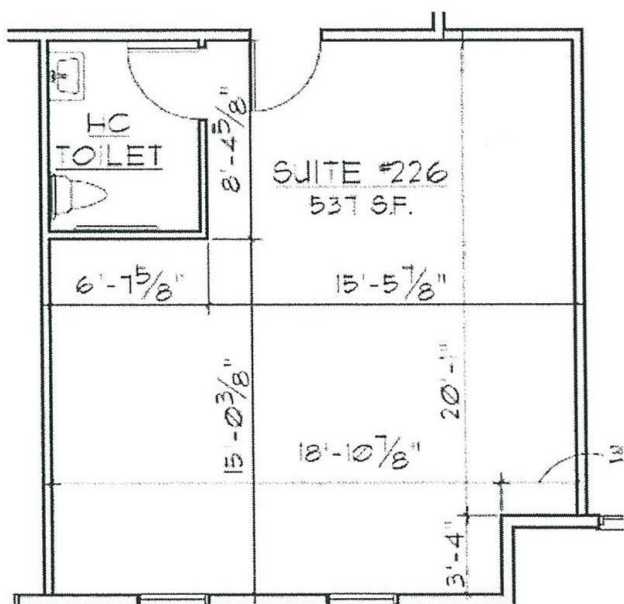
## Office / Medical Space

Plainsboro Village Center and Plainsboro  
New Downtown  
**Schalks Crossing Road**  
Plainsboro, NJ 08536

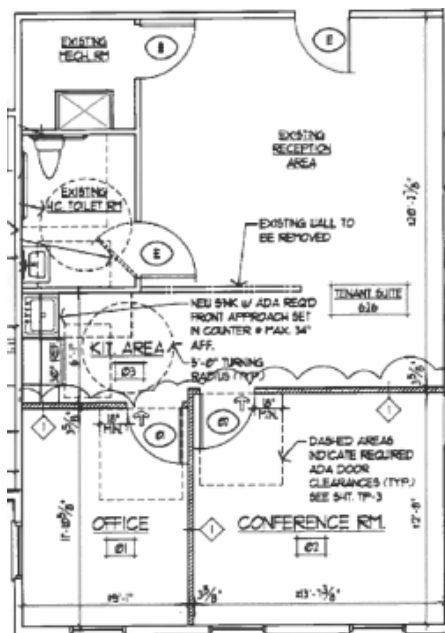
### Suite 224: 2,704 SF



### Suite 226: 564 SF

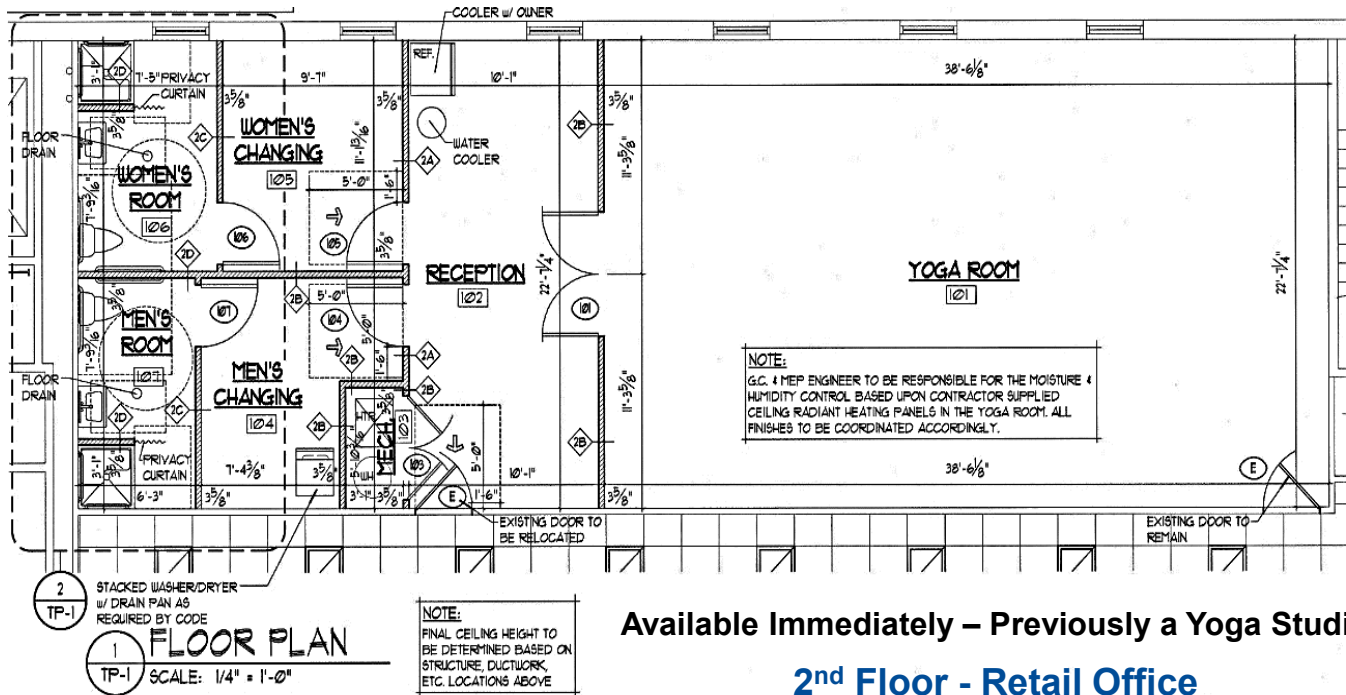


### Suite 262: 964 SF



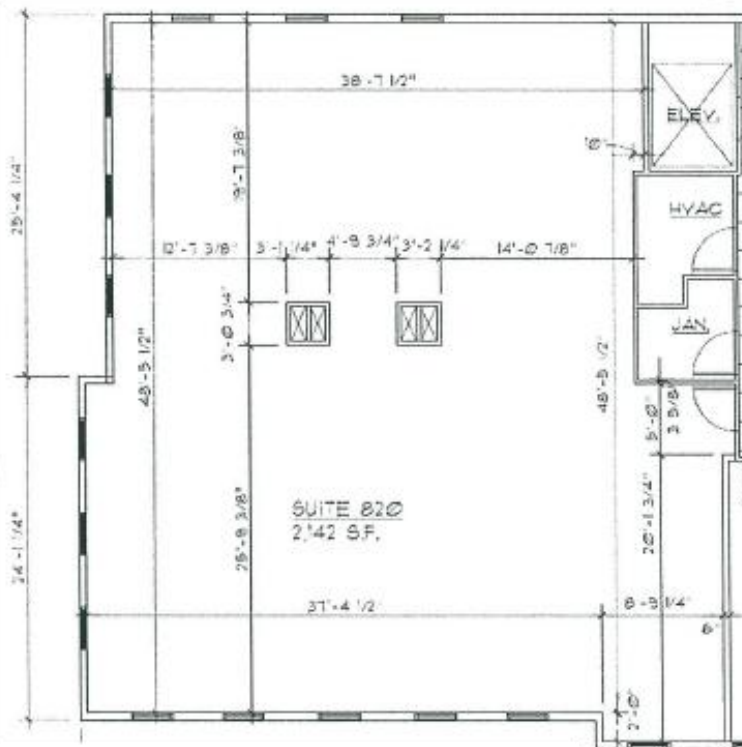
**3 Market Street**

**Suite 426: 1,882 SF**



**4 Market Street**

**Suite 820: 2,520 SF**



# For Lease

## Office / Medical Space

Plainsboro Village Center and Plainsboro  
New Downtown  
**3 Liberty Street, Buildings 10 & 11**  
Plainsboro, NJ 08536



*Situated within a newly constructed Village Center consisting of 9 buildings which provide a combination of Office, Retail, and Medical uses.*

**Suite 1038, 3rd Floor**  
**1,783 SF Medical Space**  
**Available Immediately**

- 5 Exam Rooms
- 1 private Office
- Waiting/Reception
- 1 Bathroom

